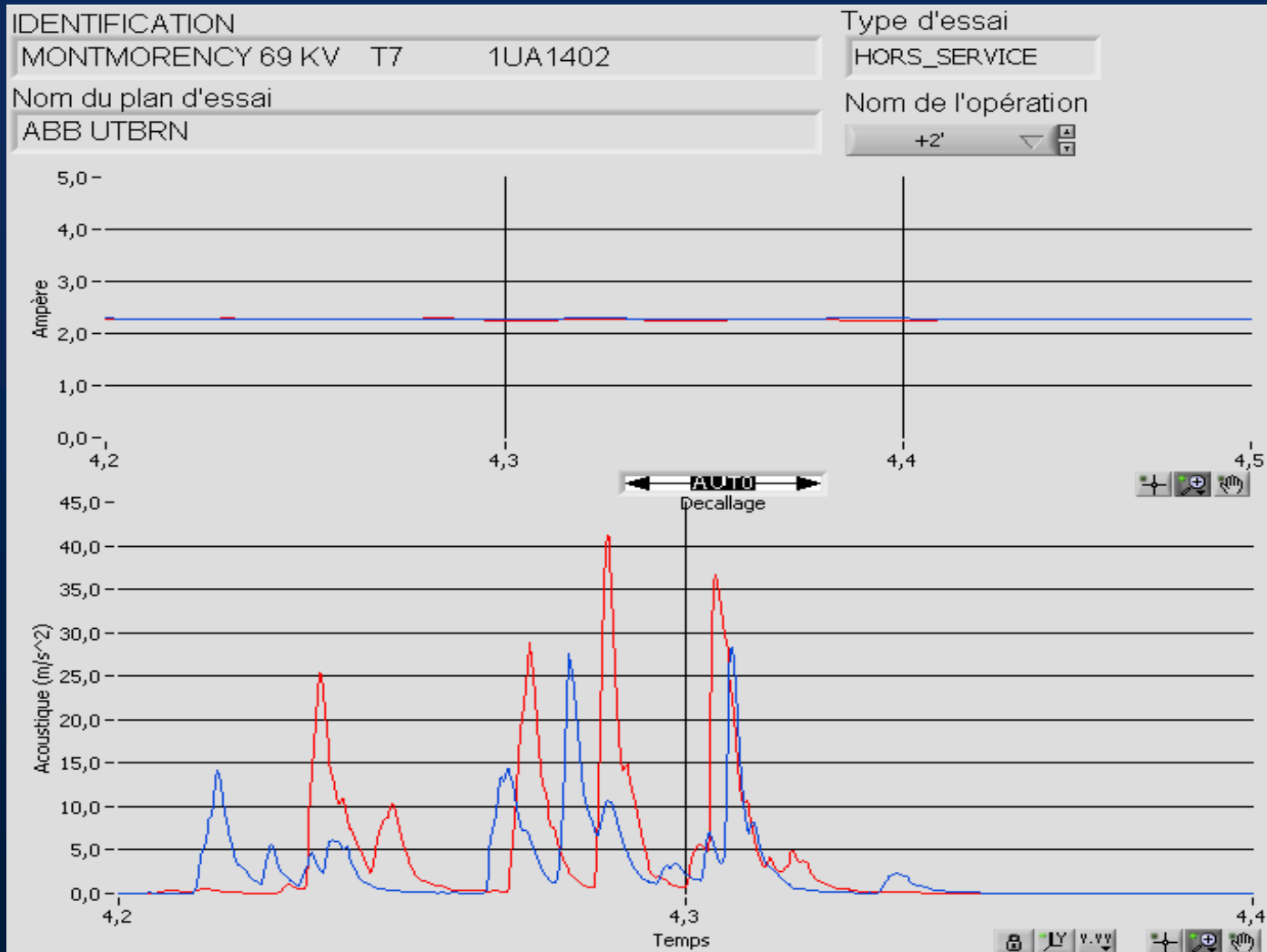


# ***EXAMPLES OF MAINTENANCE WITH ACOUSTIC DIAGNOSTIC***

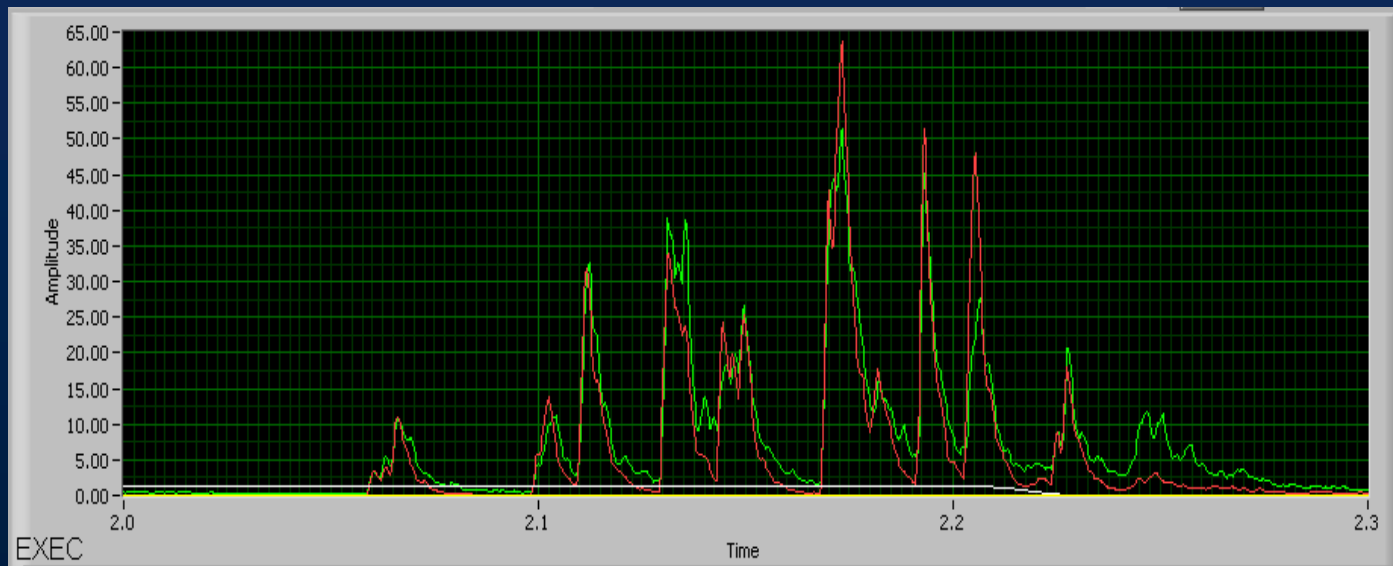
**Marc Foata**

# UTBRN linkage wear



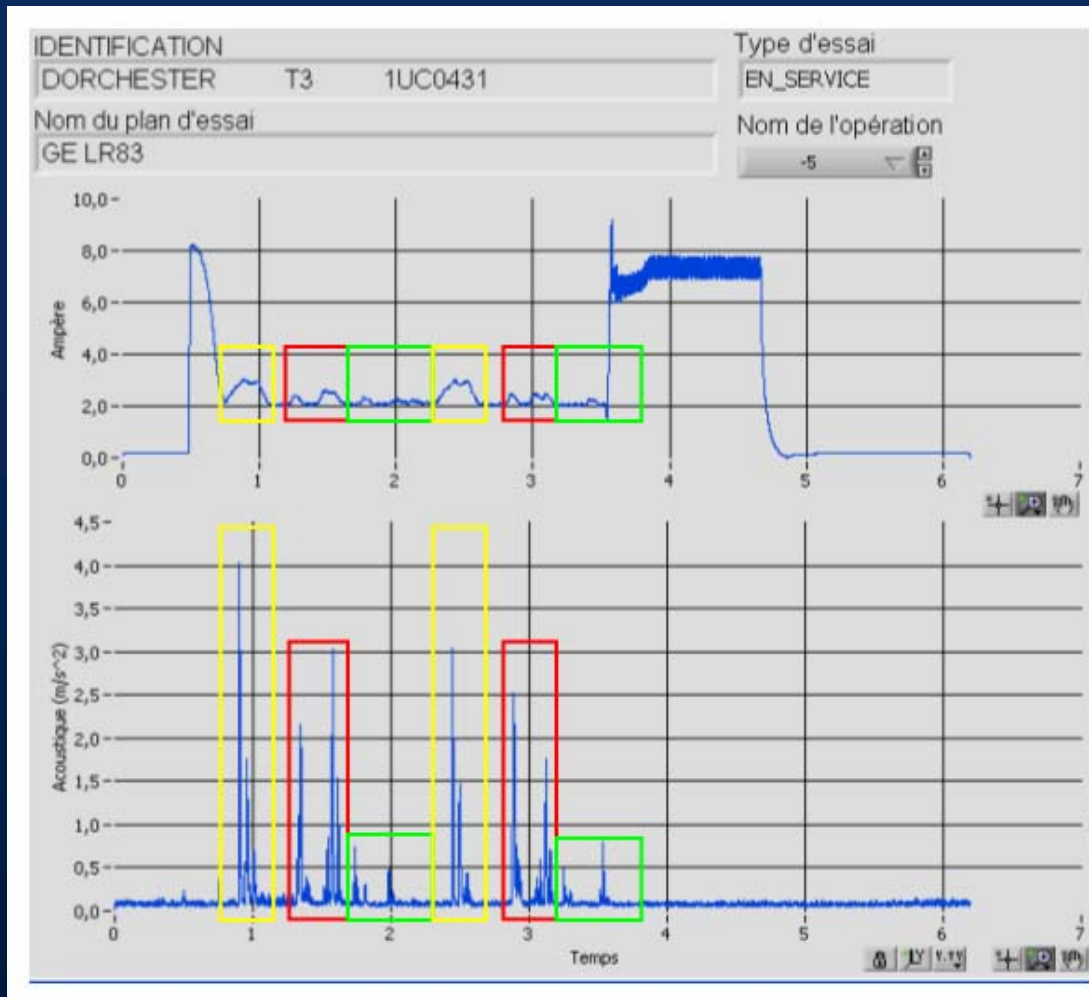
# UZ contact wear

This unit had totalled more 630000 operations. No information on the last time contacts were changed. Contact condition was not known before opening, but were expected to be worn out.



Measurement above is before opening. Previous analysis suggest much less than 50% wear. Inspection eventually revealed low wear (less than 25%) on rollers thickness.

# Wrong synchronism – GE LR83

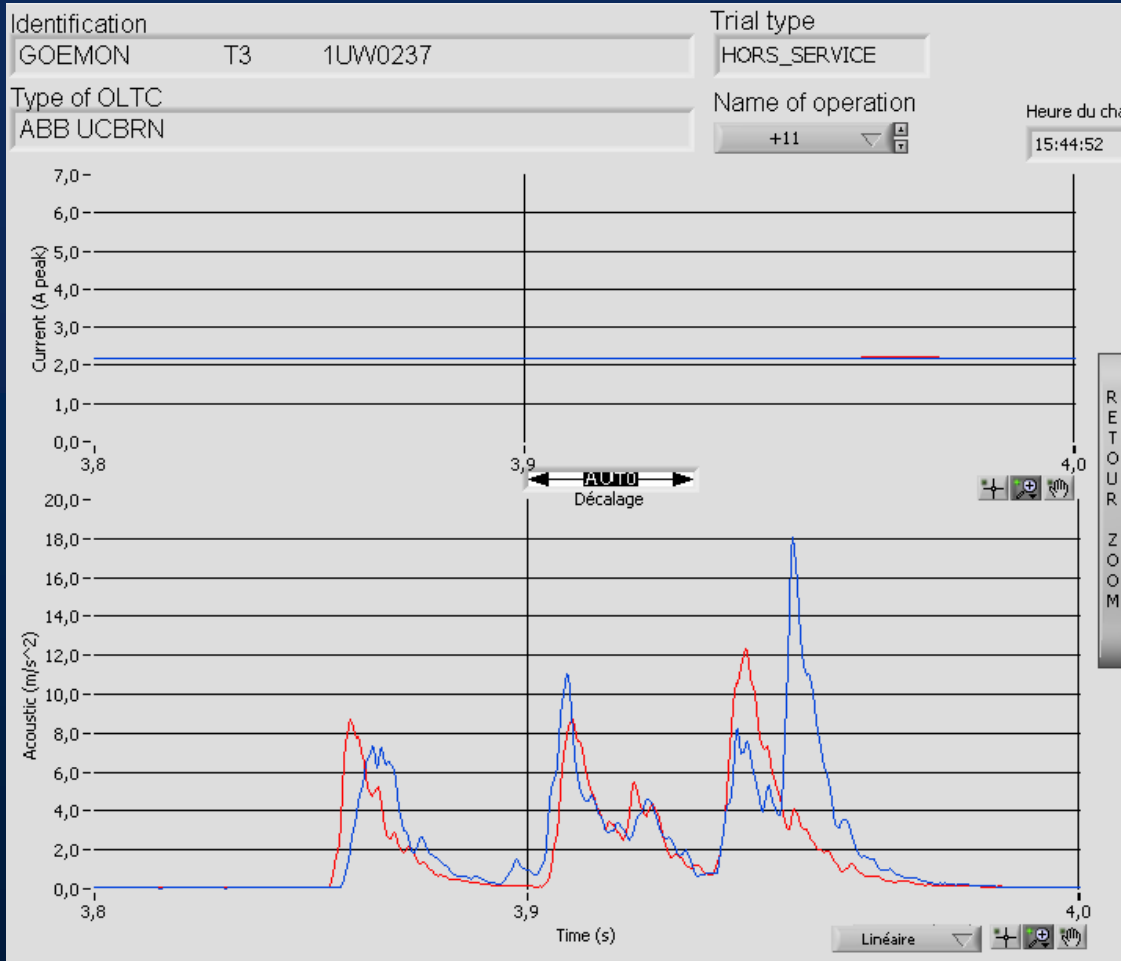


Yellow – Contact making

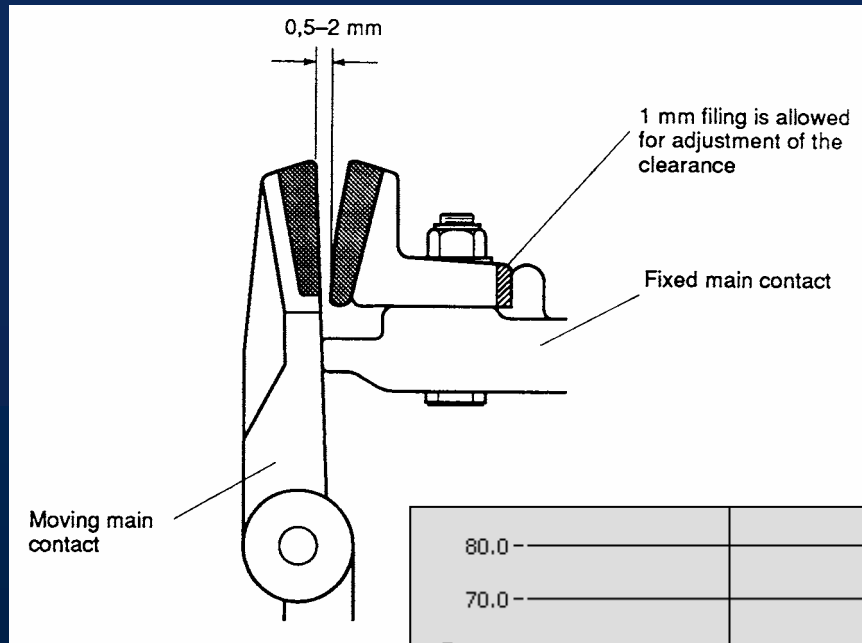
Red – Contact breaking

Green – Selector moving

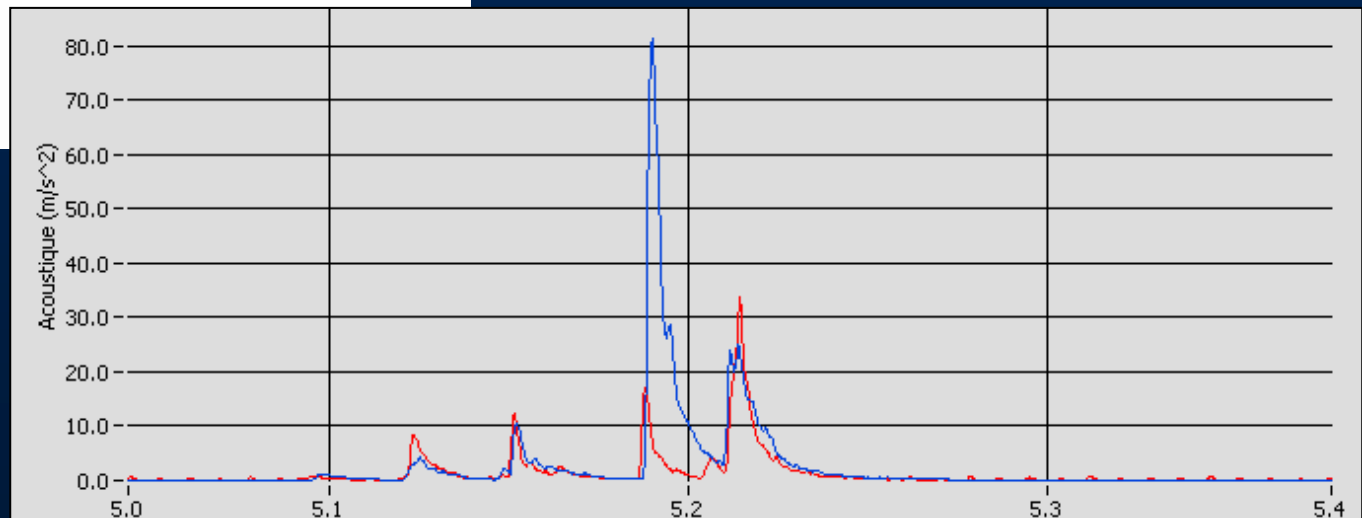




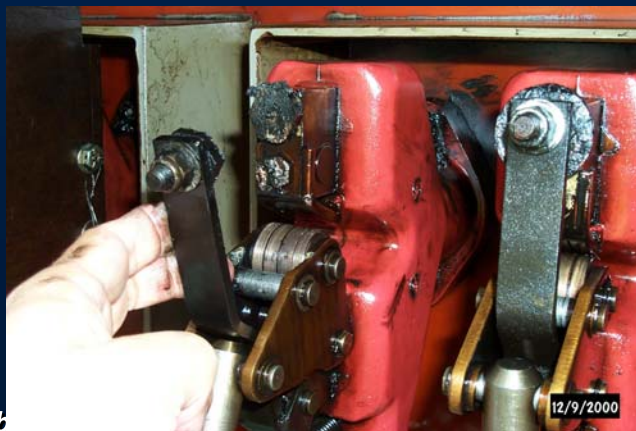
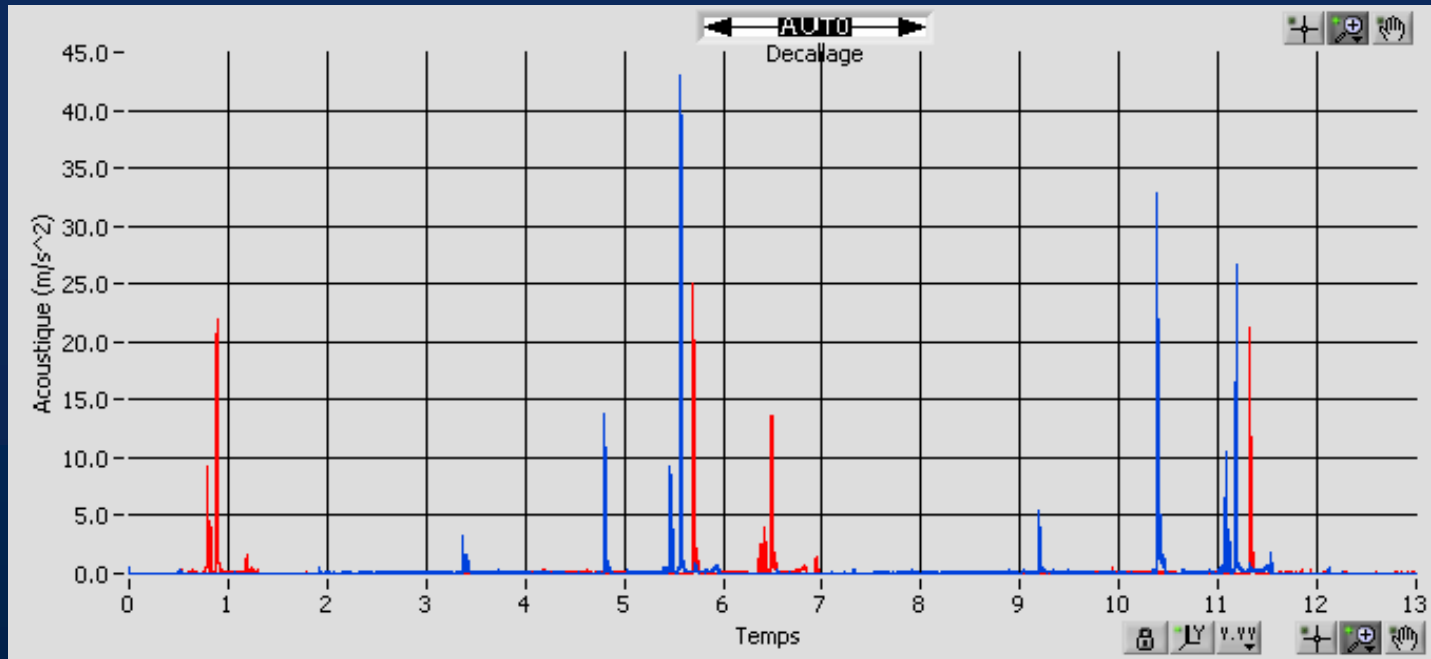
# Bent Contacts on ABB-UC



Bent Contacts  
Straight Contacts

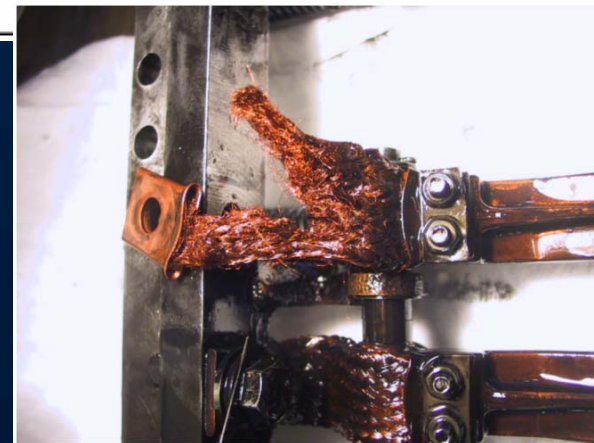
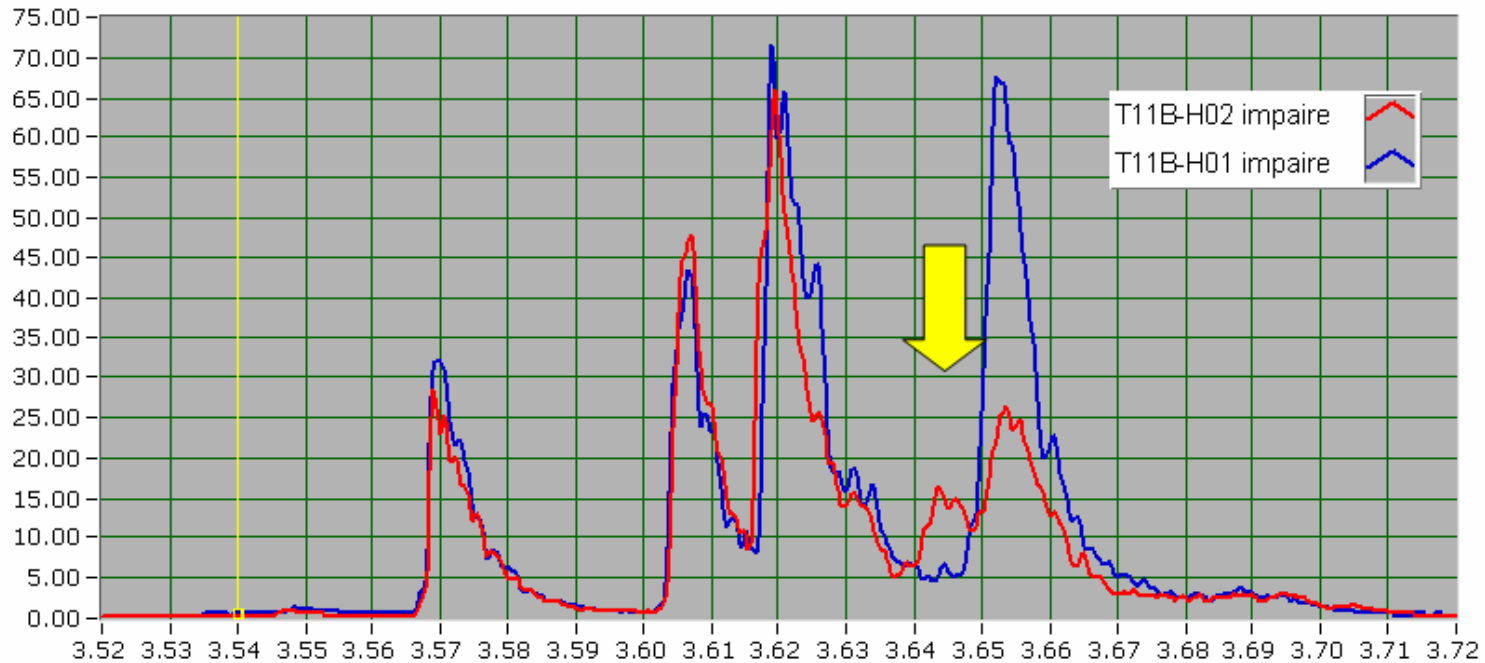


# Synchronism Problem on RCBT

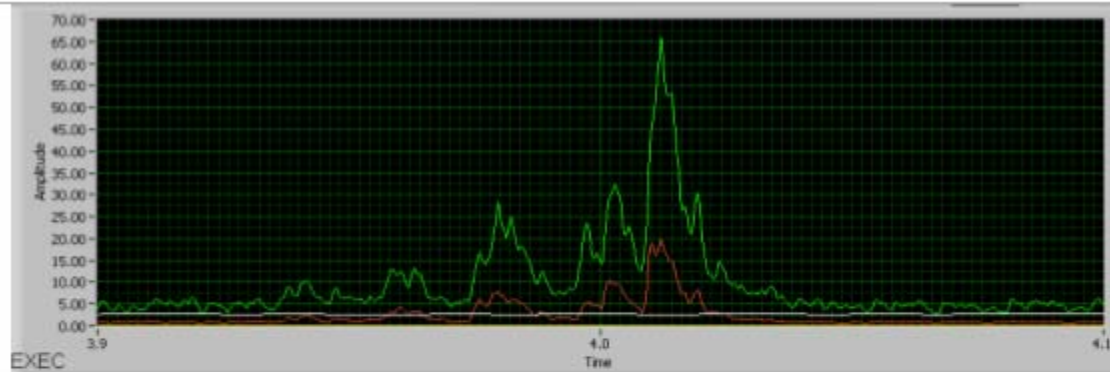


Bad Synchro  
Good Synchro

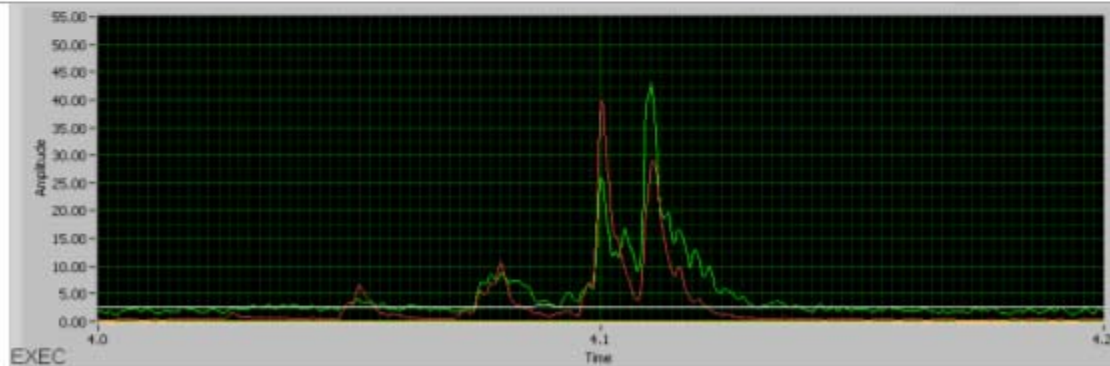
# Priority on suspicious units



# Reeinhausen M - contact wear



Worn out contacts



New contacts

# Weak springs – Reinhausen D

